

January/February 2014

The **Perfins** Bulletin

Volume 68, Number 1

Whole Number 644

- Luxembourg Christmas stamps with holes
- C23A - User Identified
- Des. 90-19 - Additional User
- F45 - User Corrected
- G211 - User Corrected
- G.B. I2470.01a - Cover Damaged in Action
- Private Auctions Update
- Cuban DUN - Revisited
- Auction #136
- Auction #134 - Prices Realized



Our heartfelt desire is that your 2014 be as cheerful and peaceful as the birds shown above. This New Year's greeting was mailed in Cedar Rapids, IA, on December 27, 1909, using an R75 (RI) perfin in a "1908 One cent" Franklin stamp. Post card courtesy of Bob Szymanski (LM#145).

World Stamp Show NY 2016

Jerry Hejduk (LM#3710)

Once every ten years the World Stamp Show is held in the United States. The last such show was at the Washington D.C. Convention Center in 2006. The show's next visit to the U.S. is scheduled from May 28 through June 4, 2016, at the Jacob K. Javits Convention Center in New York, NY.

It should be noteworthy to Perfins Club members that The Perfins Club has purchased Society Booth space that is adjacent to similar space purchased by

the Precancel Stamp Society for the seven day international show. I have volunteered to staff the Booth for the full seven days of the show and will be seeking additional volunteers for 2-3 hour intervals throughout the show. Mark your calendars to record this future happening and raise your hand when you know that you will be attending the show, particularly if you find that you have a few hours to volunteer to help staff the booth.

The *Perfins Bulletin* is the official journal of The Perfins Club - Founded 1943

2014 OFFICERS, DIRECTORS & MANAGERS

EXECUTIVE BOARD

PRESIDENT

Jerry Hejduk
P.O. Box 490450
Leesburg, FL 34749-0450
352-326-2117
flprepers@comcast.net
Term expires 12/31/2014

VICE PRESIDENT

John C. Foster
4113 Paint Rock Drive
Austin, TX 78731-1320
512-346-8253
retsoftware@hotmail.com
Term expires 12/31/2016

SECRETARY

Ken B. Rehfeld
P.O. Box 125
Spokane Valley, WA 99016-0125
509-924-6375
kenrehfeld@comcast.net
Term expires 12/31/2016

TREASURER

Dan Baugher
14618 Big Timber Lane
Chesterfield, MO 63017-5659
636-537-5365
dbaugher@charter.net
Term expires 12/31/2015

DIRECTORS-at-LARGE

Doug Turner
P.O. Box 3069
Ventura, CA 93006-3069
805-339-9575
dturner@west.net
Term expires 12/31/2014

Paul Mistretta
4148 Commodore Drive
Atlanta, GA 30341-1533
678-547-9344
paulmistretta70@gmail.com
Term expires 12/31/2015

Duane Spidle
6140 Coyote Lane
Peyton, CO 80831-8300
719-683-3309
duaneandsue@elpasotel.net
Term expires 12/31/2016

IMMEDIATE PAST PRESIDENT

Bob Szymanski
10 Clarridge Circle
Milford, MA 01757-1371
508-478-7303
perfinman@comcast.net

The Perfins Bulletin EDITOR

Ken Masters
7909 N. Main Street
Kansas City, MO 64118-1449
816-835-5907
KRMasters@aol.com

MANAGERS

AUCTION

Joe Giampietro
6478 State Road, G-10
Parma, OH 44134-4166
440-888-1470
mo13jo@aol.com

COVER SALES MANAGER

Millard J. Driscoll
301 Driver Avenue
Summerville, SC 29483-2961
843-875-0847
mdriscoll@sc.rr.com

FOREIGN CATALOG CHAIRMAN

John M. Randall
2540 Carquinez Avenue
El Cerrito, CA 94530-1548
510-233-6647
jv.randall@comcast.net

LIBRARIAN

Doug Cutler
5943 Gullstrand St.
San Diego, CA 92122-3819
248-212-0821
sobearcat@hotmail.com

PERFINS SALES MANAGER

Robert T. Combs
P.O. Box 220
Tome, NM 87060-0220
505-866-0949
stampmgr@hubwest.com

PUBLICATION SALES MANAGER

David Lightle
10616 Cielo Vista del Norte NW
Corrales, NM 87048-8902
505-898-8037
perfinpaul@msn.com

SUNSHINE

Francis Stunzi
37 Smith Street
Rouses Point, NY 12979-1602
518-297-2169
fastunzi@primelink1.net

U.S. CATALOG CHAIRMAN

Steve Endicott
20 Greensburgh Lane
San Anselmo, CA 94960-1000
415-454-1475
perfins@gmail.com

U.S. REVENUE CATALOG CHAIRMAN

Arthur J. Mongan
12432 Pretoria Drive
Silver Spring, MD 20904-1845
301-572-5459
revs.perfins@gmail.com

The Perfins Bulletin

EDITOR

Ken Masters

ASSOCIATE EDITORS

Rudy Roy - U.S.Perfins
Doug Turner - Non U.S. Perfins
Myra Walker - Proofreader

The Perfins Club membership is open to all persons interested in the collection and study of Perforated Initials and Insignia in postage stamps. Yearly dues are \$15 for U.S., \$18 for Canada and \$25 for other Non-U.S. Dues may be mailed to the Secretary listed above or by PayPal to perfin@charter.net. Since the club is on a July 1 to June 30 dues year, appropriate dues adjustments are made the first year based on the actual date of membership. Annual dues include a subscription to *The Perfins Bulletin*, mailed bulk rate printed matter. Mailing by 1st Class for an additional postage charge. Applications are available at www.perfins.org or from the Secretary listed above.

Please submit *Bulletin* articles, news, or advertisements to:

Ken Masters

7909 N. Main Street, Kansas City MO 64118-1449

(816) 835-5907 KRMasters@aol.com

The Perfins Bulletin is copyrighted by The Perfins Club. Cited quotations are encouraged. Permission for extensive use of information in the *Bulletin* may be obtained from the editor.

The Perfins Club



www.perfins.org

Visit The Perfins Club web site at <http://www.perfins.org> -- Mike Hynes, Webmaster (mike@precancels.com)

Classic Railroad Perfins Collection Available

Jerry Hejduk (LM#3710)

The family of Stephan Grabowski (Closed Album #3409) has inquired whether any Club members would be interested in acquiring Stephan's expansive collection of U.S. Railroad Perfins. I was most pleased to learn of the family's interest to have Stephan's exceptional collection passed on to a Club member with a similar deep appreciation of railroad perfins.

The collection, which is housed in five large "D" ring binders, contains 1,000+ 8 1/2 x 11" pages of text and exhibits of 5,000+ off-paper stamps, 248 covers and postcards, plus 117 cover strips with corner card, postmark and stamp. The collection will be available for inspection February 12-15, 2014, at the Florida Precancel Bourse and Perfins Xchange to be held at the Holiday Inn Express, 4750 North Dale Mabry Highway, Tampa, FL 33614-6509.

Active Perfins Club members in good standing as

of November 15, 2013, will be eligible to participate in a bidding process to be open from March 15 through March 31, 2014. There will be no bidding increments and the highest bid wins at the amount bid, regardless of the next highest bid. In the unlikely event of a tie high bid, the member with the lowest membership number will prevail. Bids are to be in U.S. Dollars (USD) and bids below \$300 USD will not be accepted.

A twelve page prospectus, including a stamp inventory, is available for those members who would like to consider participating in the bidding process for this exceptionally fine Railroad Perfins Collection. Requests for a prospectus may be sent to me via email or USPS snail mail at the address listed under my name on page 2 of this *Bulletin*.

More "Holey" Stamps

Dave Kent (#1901)

Goodness sakes! Now they are hiring graffiti artists to punch holes in stamps, and they aren't even anyone's initials.

The artist's name is Christian Pearson, a native of Luxembourg, where he is better known by his street name SUMO! (yes, the exclamation point is included). After a youthful career of attacking walls with cans of spray paint, he discovered that people would actually pay for his art, and he settled down in a studio now filled with canvases and more conventional styles of paint.

The Luxembourg post office commissioned him to design this year's Christmas stamps, two

seemingly conventional yet colorful views of tree ornaments. But he couldn't just leave it at that. The snowflake-like patterns at the lower right and upper left of the ornaments are punched into the paper. Obviously the patterns were intended to be seen against the white of an envelope when used to mail your cards. A black background was used here to make the patterns stand out better.

These are traditionally-gummed stamps (now classified as WAG - Water Activated Gum). Has anyone seen any self-adhesive stamps with patterns punched into them? How would that process work?



Front and Back of Luxembourg's 2013 Christmas Stamps.
Note the snowflake-like patterns punched into the paper.

2014 Convention - August 4-9, 2014
Sheraton Westport Plaza Hotel, St. Louis, MO
Mark Your Calendars Now!

The User of Pattern C23A is Adler Organ Company

John Welsch (#3832)

I was very happy to attend The Perfins Club's recent convention in Chattanooga, TN. I had a great time visiting with the other members who were there, in addition to finding many perfins and perfin covers to add to my collection. Two of these covers that I found, shown in Figures 1 and 2 on page 5, are the subject of this article.

When I returned home from Chattanooga, I looked closely at the perfin in the stamp on each of these two covers. Are they the B rated pattern **C23** or closely related B+ rated pattern **C23A**, {both C(A/O)} as shown on page C-3 of the *Catalog of United States Perfins* (U.S. Perfin Catalog)? **C23** makes sense as its confirmed user is "Adler Organ Company, Louisville, KY," the same as the corner card on each cover. However, the more I looked the more I thought they were pattern **C23A**, whose user has not been identified - only Louisville, KY, as its city of use.

To settle this question, I sent a scan of each cover to the Editor and asked him to electronically compare the two perfins with the Catalog images. Based on his work discussed on page 7, he determined the perfin on each cover is pattern **C23A**. Thus, it appears that "Adler Organ Company, Louisville, KY," was the user of pattern **C23A** also.

All of this information was forwarded to the U.S. Catalog Chairman and he confirmed our findings. Therefore, the verified user of pattern **C23A** will be listed as "Adler Organ Company, Louisville, KY," in A&C#4 to the U.S. Perfins Catalog. Also, the U.S. Catalog Chairman pointed out that the cover with the January 15, 1912, postmark (Figure 1) adds a new Two cent stamp, pattern **C23A**, to the "1908 Issue

Checklist," and both covers add previously unreported postmark dates to the growing "Earliest Known Use/Latest Known Use (EKU/LKU)" database.

The Adler Organ Company was established in Louisville, KY, by Cyrus L. Adler. Depending upon the reference cited, this happened during the late 19th century⁽¹⁾ or in 1903.⁽²⁾ The company was located at Chestnut and the northwest corner of 29th street in Louisville. It was also known as the Adler Manufacturing Company, the Adler Music Company, and the Beckwith Organ Company, and apparently was controlled by Sears, Roebuck & Co. during at least part of its lifetime.⁽²⁾

Adler built pianos and organs under the brand names of "Adler" and "Loreto" in addition to the "Southern Grand" (piano) brand name. Instruments built by Adler were known to be of very high quality, and they were made affordable by aggressive financing and payment installment options.⁽¹⁾ The enclosures that were found in these particular covers (Figures 3 & 4, page 6) attest to this fact - sale of an organ to Sissie Ogden in early 1912, and then the reminder of the December 30, 1912, payment due.

Adler pianos and organs were sold primarily through mail order and large retail music stores throughout the United States. The company went out of business in 1928.⁽¹⁾

References:

1. antiquepianoshop.com/online-museum/southern-grand/
2. www.pumporganrestoration.com/adler_organ_company.htm

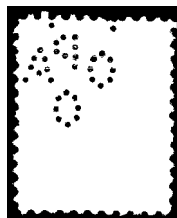
What is It ?

Steve Endicott (LM#2284)

The perfin shown at the right was shared with me at the recent convention in Chattanooga, TN, and I was asked: "What is it?" Several collectors viewed it, but without success at identification. Finally, the next day I had an epiphany and was able to identify it. Can you? The first collector to respond to me with the correct answer will receive a B rated perfin as your special reward! My contact information is on page 2 of this *Bulletin*.

As a bit of additional information that may assist

you, the perfin is in a Scott #463, the 2-cent Washington head issue. I can find no chads or dimples on the stamp.



What is the perfin pattern in this Scott #463 stamp?
The first person to send the correct identification to the U.S. Catalog Chairman will receive a B rated perfin! What do you think it is?

U.S. Pattern C23A User Identified (cont.)

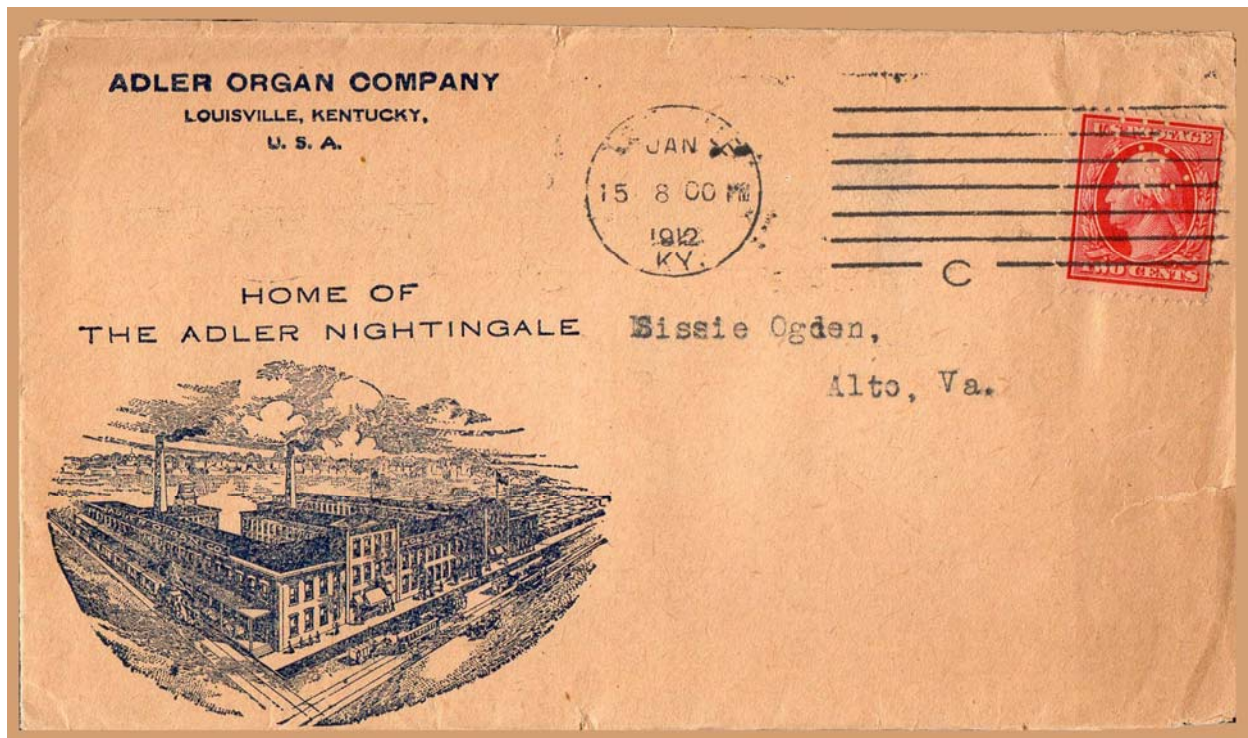


Figure 1

Adler Organ Company, Louisville, KY, postmarked January 15, 1912, and franked with a "1908 Two cent" Washington stamp perforated with partial pattern C23A that provides positive identification of the user of this pattern. This cover also adds an additional pattern (C23A) to the "1908 Issue Checklist."
(Actual size.)

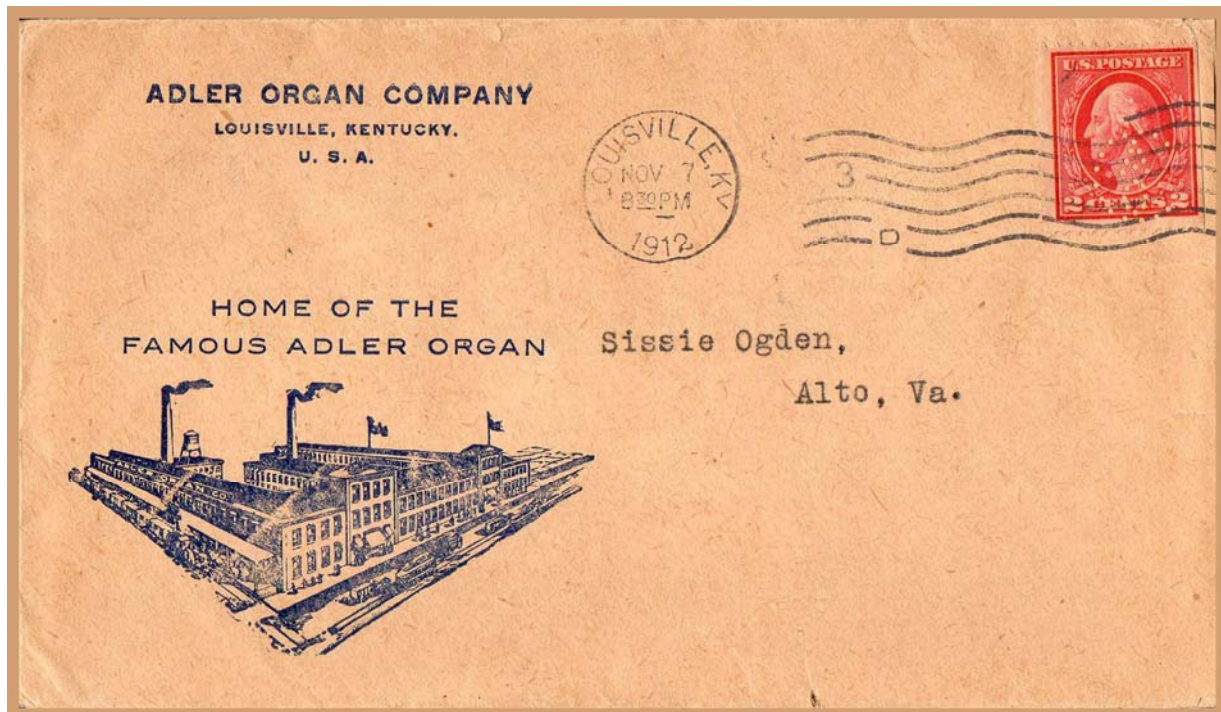


Figure 2

Adler Organ Company, Louisville, KY, postmarked November 7, 1912, and franked with a two-cent Washington stamp perforated with a complete pattern C23A that provides positive identification of the user of this pattern.
(Actual size.)

U.S. Pattern C23A User Identified (cont.)

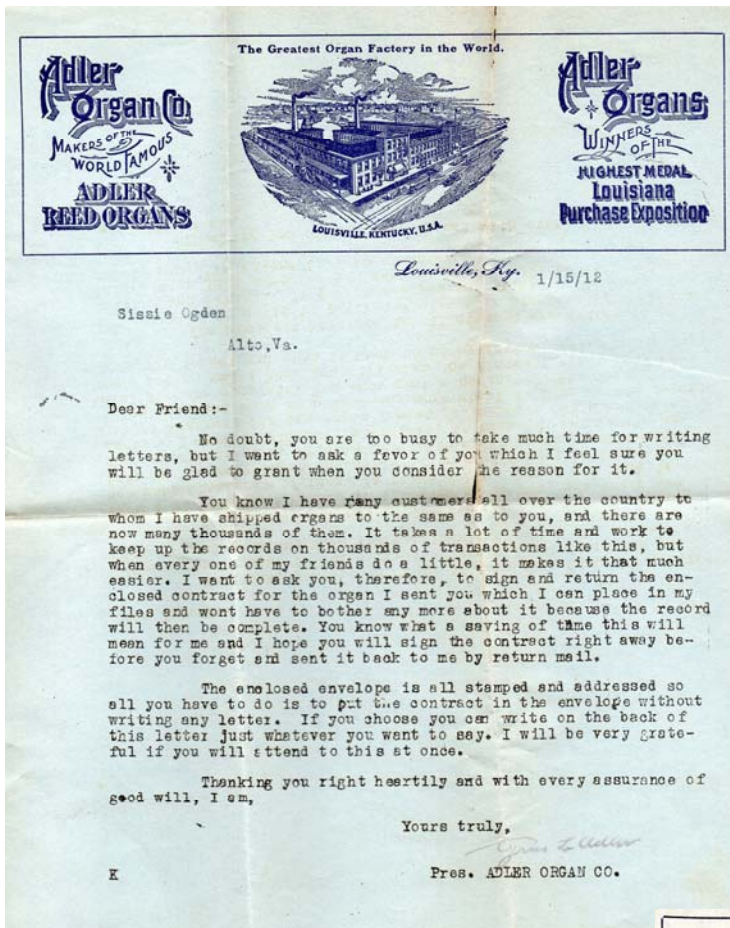
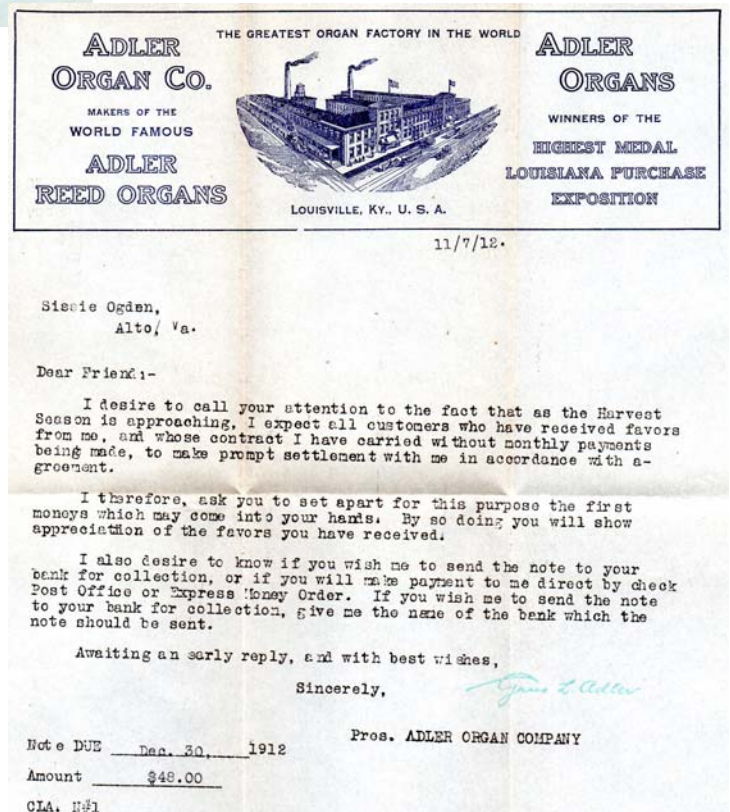


Figure 3
Adler Organ Company sales letter that was enclosed in the January 15, 1912, cover. It is interesting that the illustration of the factory in the letterhead of this letter matches the illustration on the January 15, 1912, cover (Figure 1, page 5). (Approximately 48% of actual size.)

Figure 4
Adler Organ Company letter that was enclosed in the November 7, 1912, cover. The message in this letter presents an intriguing suggestion of how the purchaser might find the funds to satisfy the December 30, 1912, note due the company.

Note that the illustration of the factory in the letterhead is different from the letter above, but matches the illustration on the November 7, 1912, cover (Figure 2, page 5). In addition, the style of the lettering in the letterhead of this letter is rather plain when compared to that above. (Approximately 48% of actual size.)



Comparing patterns C23 and C23A

Ken Masters (LM#3589)

Before John Welsch (#3832) asked me to help him identify the perfins on the Adler Organ Company covers discussed in the previous article, I had never really paid much attention to patterns C23 and C23A. When I looked at their images in the *Catalog of United States Perfins* (U.S. Perfins Catalog), the patterns appear to be very close - the major differences being the hole layouts of the letters "A" and "O." As I only have a copy of C23 in my collection, I could not compare actual perfins to determine the difference.

Therefore, the first task in this assignment was to electronically compare the Catalog images of the two patterns. The result of that comparison, as shown below in Figure 1, clearly demonstrates they are two distinctly different patterns - particularly the shape of the letter "C" in addition the hole layouts of the letters "A" and "O."

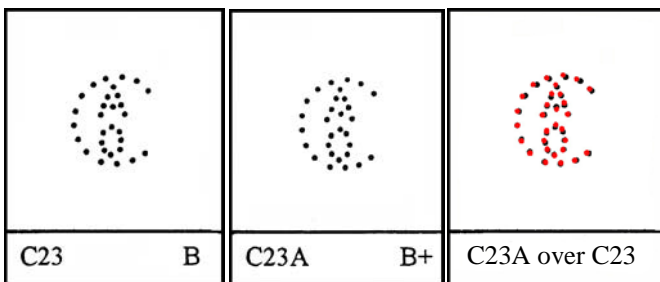


Figure 1

Catalog Images of patterns C23 and C23A and comparison of pattern C23A in red to C23. Notice significant differences in the shape of the letter "C" that are not evident to the naked eye.

The next step was then to electronically compare the perfins from the covers with the Catalog images

of C23 and C23A. The results of those comparisons, shown below in Figures 2 & 3, leave little doubt that both perfins are pattern C23A.

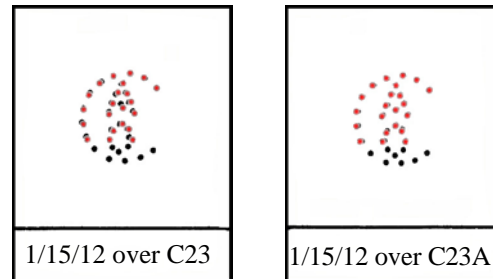


Figure 2

Perfin in red from January 15, 1912, cover compared to patterns C23 and C23A. Perfin matches pattern C23A.

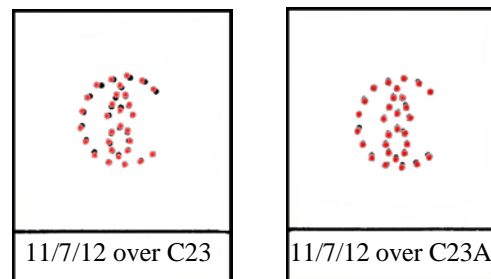


Figure 3

Perfin in red from November 7, 1912, cover compared to patterns C23 and C23A. Perfin matches pattern C23A.

These comparisons are also a vivid reminder to me that seemingly subtle differences in closely related perfin patterns when viewed by the naked eye are real when we are able to compare the patterns using actual perfins or by electronic means. This is especially true when the differences are horizontal spacing between holes or the width of letters.

Colorful Label on eBay

Ken Masters (LM#3589)

Here is an item spotted by Rudy Roy (#1124) on eBay. Rudy's message was that while the punch is a revenue perfins date, the item is such a beauty that he thought you would enjoy seeing it.

The seller provided no information beyond what is obvious when looking at the label. However, after four bids by three different bidders, the item sold for \$44.89, including shipping.

My attempts to find any Internet references to Blackhawk beer specifically in Chicago or United Brew Co., Chicago, IL, were unsuccessful. If you have any knowledge about either, please forward them to me (page 2) and we will share them in a future *Bulletin*.



eBay item #161156517224
Blackhawk Beer label with 7-13-39 date punch.
(not actual size.)

Additional User Identified for Schermack Des. 90-19

Dan Baugher (#3825)

As with most collectors these days, you probably started out collecting when you were much younger. I started going with my father at the age of seven to a local stamp dealer's shop in Louisville, KY, every Saturday morning to discover those special treasures. Fast forward to today. We are lucky in St. Louis to have 2 stamp dealers that have a brick and mortar shop where you go in to talk stamps and look at the new material that has been found.

It was one of those days that one of my dealer friends showed me the cover illustrated in Figure 1 below. While he is not familiar with perfins, he knew it was a Schermack and asked if I was interested. Of course I was! As the cover is missing a piece in one corner, I was able to purchase it at a reasonable price.

When I got home, I looked up the pattern in my *Catalog of United States Perfins* (U.S. Perfins Catalog). I found it is pattern **Des. 90-19** and the user is identified as Kabo Corset Company, Chicago, IL, not Wilber Mercantile Agency shown on the cover's corner card. Thus, it appears that I have found an additional user for **Des. 90-19**.

After doing an Internet search, I was unable to find a direct connection between Wilber Mercantile Agency

and Kabo Corset Company. However, I did find they were both in Chicago around the same time period.

The Kabo Corset Company was owned by members of the same Florsheim family that created the well-known Florsheim Shoes.⁽¹⁾ Simon Florsheim immigrated to the U.S. from Germany in 1854 at the age of 17 years. He was initially in the fur business and became a corset manufacturer in Chicago around 1880. By 1902 he was in business with his son, Norman S. Florsheim, and their company, S. Florsheim & Son, became the proprietor of the Kabo Corset Company by 1903. Based on many ads in newspapers and magazines, the business continued until at least the mid-1940s.

The Wilber Mercantile Agency was a legal firm established in Chicago in 1872.⁽²⁾ The President of the company was Mr. M.D. Wilber of New York and the Secretary was Mr. E.J. Wilber of Chicago.

The company specialized in financial reporting and debt collection. Branch offices were established in most major cities in the midwestern and eastern areas of the U.S. This allowed their attorneys to be close to their customers and respond to their needs in a timely manner. As a further service to their

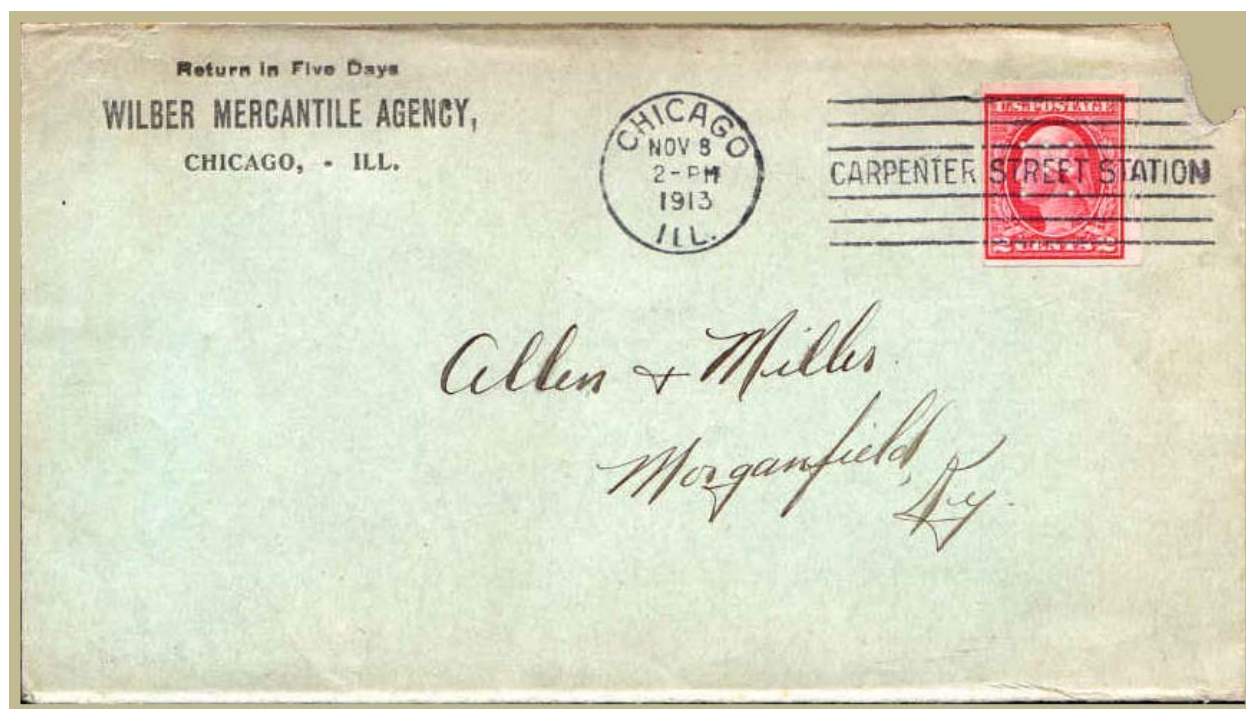


Figure 1
Wilber Mercantile Agency, Chicago, IL, cover, franked with a perforated
2-cent Washington Schermack stamp provides a new alternate user for Des. 90-19.
(Actual size.)

Additional User for Des. 90-19 (cont.)

customers, they included an “Abridged Digest of Collection Laws” in their annual *Attorneys’ Directory* (Figure 2 below).⁽³⁾

According to the records, “The facilities [Wilber Mercantile Agency] furnished prompt, correct, and reliable information as to the standing and responsibility of merchants’ firms, stock companies, and financial institutions in any section of the

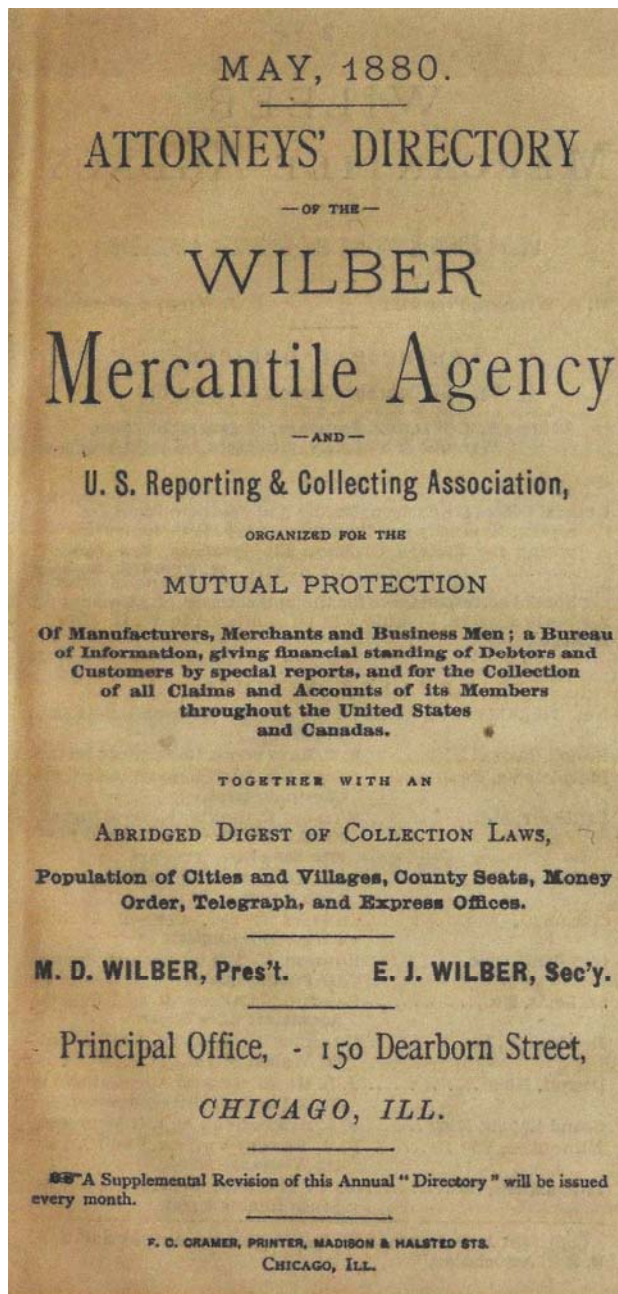


Figure 2

Front cover of Wilber Mercantile Agency's Annual Directory of their Attorneys.⁽³⁾ Note that this Directory also included an “Abridged Digest of Collection Laws” for the convenience of their clients.

Union.”⁽²⁾ Thus, it seems reasonable to postulate that Wilber Mercantile Agency could have provided financial services to the Kabo Corset Company at some point during their existence.

A scan of the cover and a copy of the results of the Internet search were forwarded to the U.S. Catalog Chairman, Steve Endicott (LM#2284), for his review and opinion. The information was also forwarded to Curt McCoy (#3962) as part of his “2013 Schermacks with Perforated Control Marks” Census. Both Steve and Curt agree with this analysis. Therefore, “Wilber Mercantile Agency, Chicago, IL,” will be added as an alternate user for **Des. 90-19** in the Supplemental Information pages in A&C#4 to the U.S. Perfins Catalog. The following note will also accompany this entry: “Wilber Mercantile Agency was a legal firm. They were possibly representing Kabo Corset Company.”

[Editor’s Note: During the review of the initial draft of this article, Curt McCoy forwarded some interesting information that surfaced about **Des. 90-19** in his “2013 Schermacks with Perforated Control Marks” Census. Curt reports that the EKU (Earliest Known Use) of Kabo Corset Company covers with **Des. 90-19** is September 23, 1910. A steady stream of such Kabo Corset covers continued until February 1912, when they stopped for the next year.

In late February-early March 1913, three Kabo Corset covers are recorded, and then nothing for the eight months preceding the November 8, 1913, Wilber Mercantile Agency cover discussed in this article. The next Kabo Corset cover did not appear until December 1913, and continued on a regular basis again until February 10, 1914, the LKU (Latest Known Use) of **Des. 90-19**. After that, the machine started breaking pins at a rapid pace.

The above tracing of the Kabo Corset covers leaves us wondering why there are two periods of prolonged time where no Kabo Corset covers are reported? Perhaps there are still some unreported covers that would fill one or both of these gaps. In any case, more research into this situation is needed to adequately answer this question.]

Reference:

1. <http://www.14to42.net/21street0.9.htmlc>
2. <http://books.google.com/books?id=AWdGAAAAYAAJ> Then search “Wilber Mercantile Agency”
3. <http://www.mocavo.com/Attorneys-Directory-of-the-Wilber-Mercantile-Agency-and-U-S-Reporting-Collecting-Association/213541>

Would the Real Owners please raise their hands ?

Patterns F45 and G211

Steve Endicott (LM#2284)

Members regularly send scans of covers to me with new corner card information and/or with additional postmark information. This is appreciated. Usually the information confirms or adds to our knowledge base.

Consider my surprise when Rudy Roy (#1124) recently sent to me two covers with user names completely different from what is in the *Catalog of United States Perfins* (U.S. Perfins Catalog). Adding to the puzzle is the fact that the initials of these newly documented users exactly match the perfins. But, the initials of the users in the Catalog also exactly match the perfins. I have not been able to find any business link between the users. Which one is correct?

Some readers are aware of my "NFL replay" philosophy to making changes to information in the Catalog. I need conclusive and overwhelming evidence that the proposed change/correction to published Catalog information is valid. The first cover provided to me by Rudy fits that scenario; the second cover presents several questions. So, for both patterns, the respective user information will be modified in A&C#4, unless members can provide

information to the contrary that would support the current Catalog information. After reading the details presented in the following paragraphs about these two patterns, please check your cover collections and send any additional information to me. My contact information is on page 2.

Pattern F45

Pattern **F45** (FB/&Co) is listed in the U.S. Catalog as belonging to "Finlay Barrell, Chicago, IL." However, as there is no asterisk in the listing, this usage has not been verified by a cover seen by a recent U.S. Catalog Chairman. The cover, illustrated in Figure 1 below, clearly shows a user of **F45** as "Fownes Brothers and Company, New York, NY." Also, the cover is addressed to "Harrods Buenos Aries Ltd.," the only overseas branch of the renowned Harrods of London.⁽¹⁾

Finlay Barrell was in the agricultural business;⁽²⁾ Fownes Brothers were in the women's apparel business.⁽³⁾ The Catalog lists "L. Wertheimer Department Stores, Incorporated, New York, NY," as a supplemental user of **F45**. Given this additional information, including the addressee of the cover, the perfin belonging to Fownes Brothers is more plausible.



Figure 1
Fownes Brothers & Company, New York, NY, cover, franked with a two-cent Washington stamp that is perforated with a D+ rated pattern F45. This user seems more plausible than the current listed user, Finlay Barrell, Chicago, IL. (Actual size.)

**Actual user of F45 and G211? (cont.)
Pattern G211**

Pattern **G211** (G&H) is listed as belonging to "Gerhard and Hey, Chicago, IL." The Catalog includes an asterisk for this user, indicating that the usage has been verified by a cover. However, the files of the U.S. Catalog Chairman do not include such a cover. Do you have one?

The cover, Figure 2 below, clearly shows a user of **G211** as "G. & H. Transport Company, Inc., New York, NY."

Gerhard and Hey was in the import/export business and claimed to have over 106 offices overseas.⁽⁴⁾ There are several G. & H. Transportation companies in the U.S. - all involved in the trucking business.⁽⁵⁾ It

is conceivable that Gerhard and Hey and G. & H. Transportation had a business relationship, making one company's use of the perfin supplemental. In that case, the exact match of the two company's initials is coincidental. Depending if a member can show me a cover with the Gerhard and Hey usage, one of these two companies will be listed as the primary user and the other as a supplemental user in A&C#4.

References:

1. http://en.wikipedia.org/wiki/Harrods_Buenos_Aires
2. <http://www.worthpoint.com/worthopedia/stock-grain-trading-booklet-finley-barrell>
3. <http://www.insideview.com/directory/fownes-brothers-co-inc>
4. <http://books.google.com/books?id=GAOpAAAAYAAJ> Then search "Gerhard & Hey"
5. Google search for "G & H Transportation, Inc"

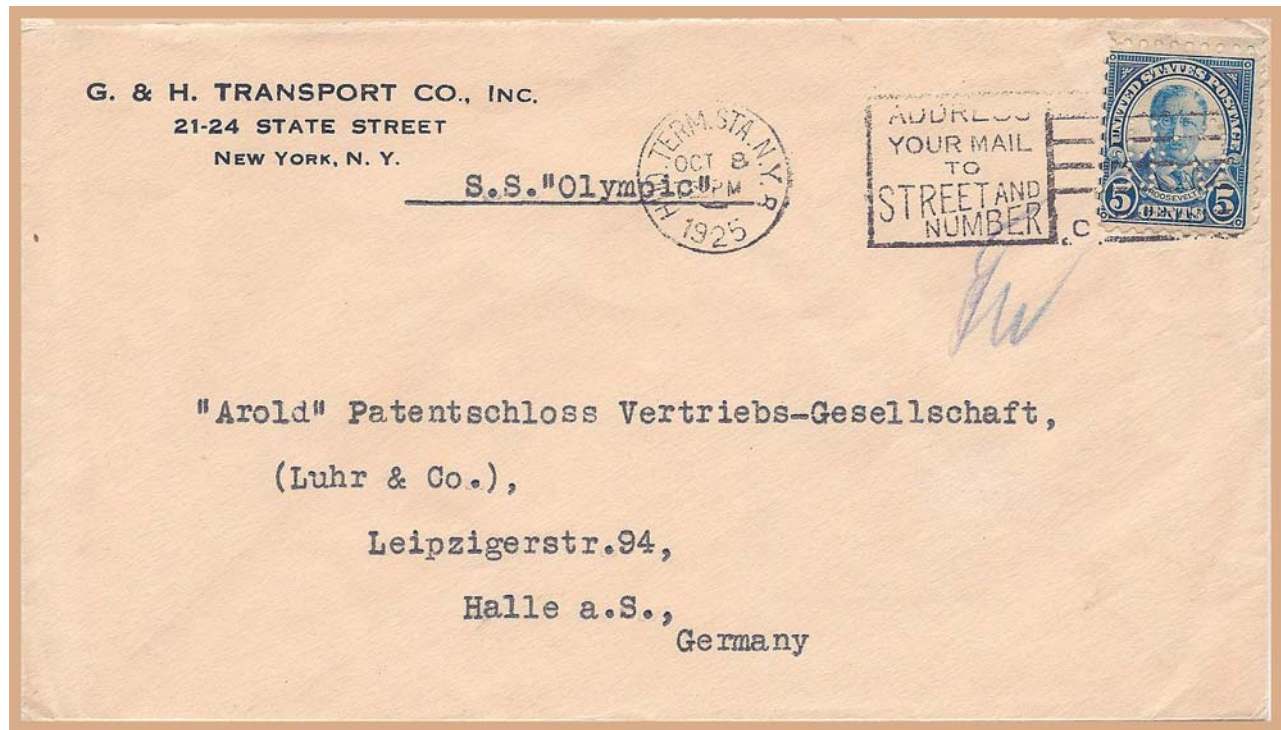


Figure 2
G. & H. Transport Company, Inc., New York, NY, cover, franked with a five-cent Roosevelt stamp that is perforated with a C rated pattern G211. Is the primary user of G211 the current listed user, Gerhard and Hey, Chicago, IL, or is it G. & H. Transport? (Actual size.)

2014 Convention - August 4-9, 2014
Sheraton Westport Plaza Hotel, St. Louis, MO
Mark Your Calendars Now!
Club's Room Rate is \$109/night
Look for more details in the March/April 2014 *Bulletin*

Wounded In Action - Great Britain I2470.01a

Joe Coulbourne (#2574)

The chase for information about this little cover (Figure 1 below) caused me to spend quite a bit of time on the Internet. The story of the cover seems simple enough. The Imperial Tobacco Company of Bristol sent Lieutenant Commander Michael V. Hoyle, R.N. this letter on 24 March 1943. As can be seen the edges are charred and the cover is in rough shape. The purple handstamp reads "DAMAGED AS A RESULT OF ENEMY ACTION." Now there is something I never expected to see on a perfin cover.

LCDR Hoyle must have been transferred as the Newbury address is lined through and H.M.S. *Cannal* (or so I thought), c/o G.P.O. London, was hand written on the front. The Newbury CDS (circular date stamp), barely visible above the Bristol CDS, reflects that the cover was redirected on March 25, 1943.

I wanted to see if I could figure out where the cover was damaged. So off to look up British Naval ships of WW II. I drew a blank on H.M.S. *Cannal*, so I started looking at other combinations of letters, all to no avail. Then I tried H.M.S. *Cannae* and got a hit. The account of William Derrick Gilding popped in my browser and the lights starting coming on. I present what was written...⁽¹⁾



Figure 1

Cover sent by The Imperial Tobacco Co. (of Great Britain & Ireland), Ltd., Bristol, Great Britain, franked with a 1 penny King George VI stamp perforated with Great Britain pattern I2470.01a.

The probable reason of how this cover was "DAMAGED AS A RESULT OF ENEMY ACTION" gives us the exciting story told in this article!

From the accounts of William Derrick Gilding

"..... At Bone we took a school over for a start as billets. Later we took over some barracks near to the docks. This building was called H.M.S. *Cannae*. This happened about Christmas 1942 into January 1943. Bone became our front line port for the 1st Army. Bizerta, fifty miles away, was the German front line for its army.

"The docks at Bone were about as big as Boston Dock, but it was packed with ships, both Merchant Navy and Royal Navy. The Signal Station was the flat roof on top of the Harbour Master's House, which is where I worked for eighteen months. There was a high bank and wall surrounding the back of the docks from the town.

"Whilst there, the docks were bombarded day and night by dive bombers from Bizerta. They were mainly Stukas, a Dyhedral wing plane like a seagull, but when it dived it screamed and was hair raising until one got used to it. They tried several times to get the Signal Station but never succeeded.

"One of our duties was to fire a red verys flare as air raid warnings over the docks. We also had an oil drum as an incinerator to burn old signal messages. One day I was burning some when I felt a flash and a bang whilst leaning over the incinerator, some fool had thrown a verys cartridge in it. I escaped with singed hair and eyelashes and small lump of brass cartridge case in my arm.

"Another close shave was when I was walking along the dock road near the railway sidings, when a Stuka appeared above and came screaming down. I dived under the rail trucks and rolled away from the road. The Stuka dropped its bomb and it fell not far from where I was but failed to explode. The case split into two from top to bottom. Of course the dive bombers bombs were very small, but could do a lot of damage.

"The Signal Station was awarded the D.S.M., but as only one person could receive it, it went by vote to the Yeoman in charge, namely Yeoman Barlow."

Wounded In Action (cont.)

So Bone, which is in Algeria and now called Annaba, Algeria, turned out to be a place and not a ship. Who would have thought? The account of William Gilding gave me the most likely cause of the damage and that being the German bombing raids that were carried out almost nightly.

Then I started searching on Bone, Algeria, and found a nice clip of an actual raid on Bone, Algeria, in early 1943. The site I found has several million clips of actual events and can be a great aid to any presentation – I invite you to check out the clip when you read this article. It can be found at:

The following four "IT/C" patterns were produced by POKO affixing machines used by **The Imperial Tobacco Co (of Great Britain and Ireland) Ltd, H/O Bristol 3**. The differences are subtle but the pins forming the foot of the "I" can be used to differentiate one machine from another. The fourth illustration, included only for reference, shows the product of the Dublin machine.

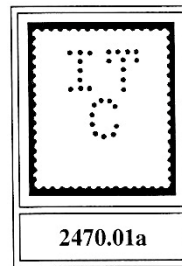
Figure 2
General information from the GB Perfins Catalog about The Imperial Tobacco Co.'s "IT/C" perfins.

www.criticalpast.com/video/65675028995_German-air-raid-anti-aircraft-gun-crew-Supermarine-Spitfire-Messerschmidts.

Information about the perfin in the stamp on the cover (Figure 1, page 12) is shown in Figures 2 and 3 below and comes from *The Perfin Society's New Illustrated Catalogue of Great British Perfins*, Section I, 2nd Edition, 2008 (GB Perfins Catalog). In summary, I think this cover has a good story and shows that perfins saw action in WW II.

Reference:

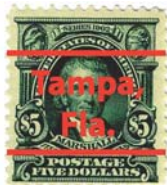
1. <http://www.bbc.co.uk/history/ww2peopleswar/stories/05/a4418705.shtml>



In use: 1935-1952.
Dates: 5 Jan 1945.
Issues: M ½d, 1½d O ½d
Q ½d-1½d, 2½d, 6d
R ½d, 1d, 2½d S 2½d
Note: Standard alphabet POKO.
Second machine - leftmost pin in the foot of the "I" is positioned slightly low.
Pmks: Bristol.

Figure 3
Specific information about Great Britain pattern I2470.01a as shown in the GB Perfins Catalog. This perfin is in the stamp on the "wounded" cover (Figure 1, page 12) that is the subject of this article.

The Florida Precancel Club Presents the Southeast's Largest Precancel Bourse and Perfins Xchange February 12 thru 15, 2014



Holiday Inn Express & Suites
4750 North Dale Mabry Highway
Tampa FL 33614-6509
For hotel reservations call (813) 877-6061 and
Request "Florida Precancel" rate of \$89.99.

Additional meeting information from
Jerry Hejduk at (352) 326-2117 or write/email
PO Box 490450, Leesburg FL 34749-0450
flprepers@comcast.net

Recruit a Member!

Ken Masters (LM#3589)

For the past several years, the Club has staffed a Society Booth and made a 1 hour presentation on perfins at the two national APS Meetings. This has been a very successful activity in recruiting new members.

We are excited to be able to announce on the front page of this *Bulletin*, the Club's intention to participate in the 2016 World Stamp Show. We believe this direct exposure to so many international philatelists will pay numerous benefits.

As Doug Turner (LM#2549) recently reminded me, there are also many local and regional shows and bourses that provide opportunities to tell your fellow philatelist about perfins. Most of these shows have tables where the various organizations place copies of their newsletter and other information about their group.

Here is where you come in! Are you going to be attending a local or regional show? If so, I will be happy to provide you with several copies of recent *Bulletins* that you could place on the "literature" table. A copy of a Club Membership Application will be included for your convenience. Just contact me (page 2) and I will send you a supply.

Private Auctions Update

Bob Szymanski (LM#145)

Although winter is here, do not worry as there are a multitude of perfins from every corner of the world to warm your heart and occupy your time. With the right bid, you can find most anything.

I'd guess that you might have thought that after auctioning off the U.S. collections of Larry Owen (4,400 patterns), Dick Mewhinney (5,630), Bob Schwerdt (5,700), and Pat Callis (5,730), you would not be able to find further opportunities to increase your U.S. collections. However, starting in January, you will have an opportunity to have perfins from the largest U.S. perfin collection ever to be auctioned - my own (5,882 patterns). Now is not the time to await the next big collection as there is only one larger in existence and that one is not up for auction!

Auctions will be held monthly from January through May inclusive and, after a summer rest, they will resume in the autumn. To participate, all you have to do is notify me. Information to reach me, Bob Szymanski, is provided on the Inside Front Cover of each *Bulletin* (page 2 of this issue) under Immediate Past President.

Keep in mind that not only is there U.S. material, but the whole world is represented by the collections of some long time perfin collectors. Large lots, small lots, expensive and inexpensive, individual stamps and whole country collections. Want lists for

U.S. stamps are also serviced from these collections from the "F" rated right up to the "B" rated. Prices are as published before - 10¢ "E&F"; 25¢ "D"; 50¢ "D+"; \$2.00 "C"; and \$4.00 "C+." "B" rated are between \$8.00 and \$16.00 depending on several factors, including the amount purchased. If you want anything special, let me know and I will always try to accommodate you.

Remember that through the Perfins Club, you can obtain perfin material from Millard Driscoll, Cover Sales Department; Robert Combs, Perfins Sales Department; and Joe Giampietro, Club Auction; in addition to these estate auctions. (See page 2 for Millard's, Robert's, and Joe's contact information.) If you belong to The Perfins Club, you must have some interest in this philatelic field. Drop me a line and let me know what you collect. I can always try to alert you when something of interest is available. For the 150 U.S. Perfin Club members who already participate, I probably already know what your interests are, but you may want to update your U.S. want list for the new material that is coming available.

Take a look at some of the material coming up in future private auctions (page 15), and, above all, have fun pursuing your "Holey" Grail!

What is this perfin?

Curt McCoy (#3962)

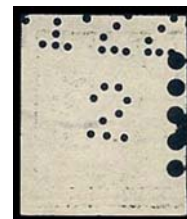
Pictured at the right is an interesting item I recently stumbled across on eBay. It was in a group of stamps with a Buy It Now price, and I pounced on it, knowing that perfins in stamps with Mailometer perforations are scarce.

I am fairly certain that this is an incidental punch - perhaps from a check, bond, or stock certificate. I sent a scan of it to the U.S. Catalog Chairman, Steve Endicott (LM#2284), for his thoughts. He suggested that it could be one of the Kodak perfins that they used to prioritize their incoming film.

For those not familiar with these type of Vending and Affixing Machine stamps, delays in shipping perforated Schermack coils between Chicago, IL, and St. Louis, MO, led The Mailometer Company to open a branch office in St. Louis in the spring of 1910. However, instead of the normal Schermack III perforators used at their other 3 branches, they sent

St. Louis a Mailometer type I perforator with which they had experimented earlier in Detroit, MI. That was soon followed by a Mailometer type IV perforator, and the stamp in question is a Scott #408 with Mailometer type IV perforations.

Now it is your turn. What are your thoughts concerning the origin of this perfin? Please send any ideas you have to the Editor. His contact information is on page 2. We will then share what you send us in the next issue of the *Bulletin*.



**What are your ideas about this perfin?
Please send them to the Editor.**

Private Auctions Resume (cont.)



Several examples of hard to find perfin that will be offered in future Private Auctions.

Perfined \$3 Columbian on eBay

Ken Masters (LM#3589)

How would you like to have a perfined Columbian stamp, especially a \$3 denomination, in your collection? A fortunate collector recently was able to add such an item to his/hers.

Thanks to Rudy Roy's (#1124) sharp eyes, pictured at the right is a \$3 Columbian, Scott #243, that was recently offered on eBay. After receiving only one bid, this item sold for \$102.49, including shipping, which seems like an attractive price to me.

The stamp is perforated with one of the three different JH perfins that the "John Hancock Mutual Life Insurance Company, Boston, MA," used on their outgoing mail. However, because of the missing hole at the end of the crook at the bottom of

the letter "J" and the distortion of the image on eBay, I cannot determine if the pattern is **J56A**, **J56B**, or **J56C**. Even so, any collector of U.S. perfins would be happy to add this example in their collection. Thanks Rudy for sharing this with us!



eBay item #321227138370
Perfined U.S. \$3 Columbian (Scott #243).
(not actual size.)

Cuban DUN Revisited

Robert Littrell (#3992)

You may recall that I wrote concerning the discovery of a Cuban **DUN** perfin cover in the May/June 2013 issue of this journal [67:49]. The company was R.G. Dun, a precursor to Dun & Bradstreet. In that article I discussed the presence (or absence) of control holes on this perfin. At the time of acquisition of the cover, my friend, Rudy Roy (#1124), speculated that the **DUN** perfin without the holes may be nothing more than a breakage of the two extra pins on a multiple die perforator.

Normally, broken pins do not create a variety. Missing perforations normally will create a much less desired perfin specimen. Yet in 1992, the *World Perfin Catalog – American Section* listed a separate **DUN** variety with no control holes instead of the normal two control holes. The Perfins Club defines a “control hole” as “an additional hole extra to the normal design.” With the **DUN** perfin, the difference is the presence or absence of two control holes: one on the top and one on the bottom of the “u” of Dun. Three combinations exist: (1) two control holes, one above and one below the “u” in Dun; (2) one control hole below the Dun; and, (3) no extraneous holes (the one listed as a separate variety in the 1992 catalog).

I think Rudy’s thought proved to be correct. Sometime after obtaining the cover, I received a gift from John Welsch (#3832)

which yields light on the subject. It was a block of four Cuban **DUN** stamps. With this block of four showing two of these types coming from different dies of the same perforating machine, I now believe that there was just one machine with perhaps ten dies that had different pin breakage. There are numerous other types of pin breaks in the three letters of the pattern which also lead to that same conclusion that the **DUN** perfin came from numerous heads.

The upshot of all of this is that, since pin breakage does not create a variety, there should be no separate listing for the **DUN** perfin without control holes. That will be my recommendation to The Perfins Club for the next revision of the 1992 *World Perfin Catalog - American Section*.



Figure 1: Cuban **DUN** block of four stamps. Two stamps have one “control hole” and two have no control holes. The blue arrows point to the single control hole below the “u” of Dun. Note the numerous missing holes in the different punches.

Join us in January at Milford

Bob Szymanski (LM#145)

The New England Perfins and Precancel Clubs will be holding a joint meeting and swap on Saturday January 18, 2014, between 9:30 a.m. and 3:00 p.m. at the Milford Town Library. The library is located in downtown Milford, MA, off Rte. 16 on Spruce Street. It is easily reachable from I-495 Exit 19 Rte. 109 or Exit 20 Rte. 85.

The meeting room is on the lower level and can be reached through the main entrance by either stairs or elevator. There is also a loading door from the outside

employee parking lot directly to the room.

For detailed directions if you do not have MapQuest or a GPS, please give me a call or send me an email. My contact information is found on page 2 of this *Bulletin* under Immediate Past President.

Also, I would appreciate it if you would let me know if you intend on coming to this meeting and what you are looking for to add to your collection. There will be plenty of perfins and, as always, the more the merrier!

Perfins Club Auction #136 Closes February 28, 2014

Guidelines: Lots will be sold to the highest bidder at the following advances over the next higher bidder: \$2-\$5 - a \$0.25 advance; \$5-\$20 - a \$0.50 advance; \$20-100 - a \$1.00 advance; \$101 or higher - a \$5.00 advance. The minimum bid for all lots is \$2.00, except U.S. C, B+ and A rated perfins. For U.S. C rated perfins the minimum bid is \$1.00, for B+ rated perfins the minimum bid is \$18.00, and for A rated perfins it is \$30.00. No "Unlimited" bids will be accepted. In case of tie bids, the earlier postmark or email date will prevail. All single

perfins are complete and in good condition, unless noted otherwise. Natural straight edges are not considered to be defects, just sheet positions. In larger lots, you should expect some faults. All lots are returnable if misdescribed; this does not apply to larger lots or mixes with the exception of gross miscounts. All lots will be prepaid before shipping. **Bid by Lot #.** Please put your mailing address on your bid sheet as this makes it easier for me to notify you after the close of the auction. **Good Luck!!**

Send all bids to: Joe Giampietro, 6478 State Road, G-10, Parma, OH 44134-4166 – USA
Email: mo13jo@aol.com

Abbreviations used:

ADD – All Different Designs
DDF – Design Different Face
MDF - Mostly Different Face

PREPER – Precancelled Perfin
SE – Straight edge(s)
(?h) - Number of missing pins

Scott #s are used. The pattern numbers and ratings for U.S. perfins are from the 1998 *Catalog of United States Perfins*, including A&C#1, #2, and #3.

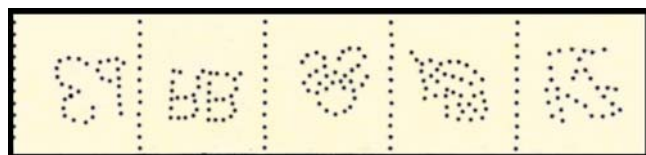
Lot#	Country	Description	Rate	Lot#	Country	Description	Rate	Lot#	Country	Description	Rate
1	US	A9 in 529	C+	28	US	C186 in 332 (SE)	C+	54	US	G166.5 in 1039	C
2	US	A34 in 720	C	29	US	C213 in 807	C+	55	US	G175 in 510	C
3	US	A46A in E13	B	30	US	C214.5 in 591	C+	56	US	H92 in 447 (coil)	C
4	US	A136 in 374	C+	31	US	C242.5 in 564	C+	57	US	H150	C
5	US	A175.5 in 619	C+	32	US	C261.5 in 512	C+	58	US	I17 in 414	C
6	US	A194 in 566	C	33	US	C356.12 in 804	C+	59	US	I43.7G-16 in 634	C
7	US	A203 in 375	C+	34	US	C429 in 737	C	60	US	I73 in 319f	C
8	US	A221-1C in 720	B+	35	US	D85 in 732	C	61	US	I74 in 589	C
9	US	A221-13 in 642 (perfin on edge)	C	36	US	D147.5 (SE - RR)	C	62	US	I98 in 643	B
10	US	A221-28 in 554	C+	37	US	E7	C	63	US	I97 (1h)	C
11	US	A253	B	38	US	E9 in 504	C	64	US	J140	C+
12	US	A273 in 711	C	39	US	E39 in 837	C	65	US	J159 (coil)	C
13	US	A275.5 in 425	B+	40	US	E43 in 837	C	66	US	K3 in 600 (perfin on edge - coil)	C
14	US	A288 (SE)	B	41	US	E45 in 638	B	67	US	K8 in 637	C
15	US	B9 in 332	B+	42	US	E56	C	68	US	K34 (scrape)	C
16	US	B116-19 in 815	C+	43	US	E77 in 427 (SE)	C	69	US	K54.5 (perfin on edge)	B
17	US	B122 in 705	C	44	US	E97 in 812	C	70	US	L42	B
18	US	B123 in 815 (perfin on edge)	C	45	US	E137 in 720	C	71	US	L60-4	C
19	US	B137.5 in 515	B+	46	US	F51 in 720 (scrape)	C	72	US	L103 in 560	C
20	US	B154 in 732	C	47	US	F56	C	73	US	L145 in 515	B+
21	US	B218 in 737	C	48	US	F84 (perfin on edge)	C	74	US	L149 in 517	C
22	US	G28 in 888	C	49	US	F85	C	75	US	L167 in 807	C
23	US	C96	C+	50	US	F110.5 in 536	C	76	US	M8	B+
24	US	C102	C	51	US	F176 in 737	C	77	US	M31 (SE)	C
25	US	C106 in 701 (1h)	C	52	US	G80 in 507	C	78	US	M36 in 510 (SE)	C
26	US	C156 in 414	C	53	US	G123 in 504	C				
27	US	C156 in 720	C								

Continued on next page

Perfins Club Auction #136 (cont.)

Lot#	Country	Description	Rate	Lot#	Country	Description	Rate	Lot#	Country	Description	Rate
79	US	M41 in 1031	C	107	US	N140 in 956	C	! Lots 131 through 134 are all U.S. PREPERS !			
80	US	M42	C	108	US	O46 in 510	B				
81	US	M49	C+	109	US	P71 in 560 (SE)	C+	131	US	N113Aa-5A in 684 with Kansas City, MO	EW
82	US	M71 in 810	B	110	US	Q1 in 720	C	132	US	N113Aa-10 in 632 with Minneapolis, MN	EW
83	US	M72 (SE)	C	111	US	Q1 in 596 (plate single)	C	133	US	S145 with Memphis, TN	B+V
84	US	M81	C	112	US	Q4 in 595	C	134	US	S195-52 in 567 with Louisville, KY	CW
85	US	M84 in 427	C	113	US	R44	C	135 US Mix - 1 ounce - D thru F ratings - has duplication.			
86	US	M92 in 554	C+	114	US	R79 in 634	C				
87	US	M145 in 558	C	115	US	S85 in 583	C	136 US Mix - 0.7 ounces - D thru F ratings - some damaged - has duplication.			
88	US	M193 (1h)	C	116	US	S195-58 in 504	C				
89	US	M224 (SE)	C	117	US	T42.5 (SE)	C+	137 US Mix - 0.4 ounces - D thru F ratings - commemoratives.			
90	US	M246 in 634 (1h)	C	118	US	T43 in pair 562 (nice cancel)	C				
91	US	M263 in 556	C	119	US	T83	C	138 US Mix - 14 Designs - D thru F ratings.			
92	US	M270 (shaved side)	C	120	US	U24 (perfin on edge)	C				
93	US	N19 in 775	C	121	US	U80.5 in 638	C	139 US 1987 Railroad Album with 90 perfins plus dups.			
94	US	N34 in 465	C	122	US	W72.68 in 711	C+				
95	US	N59 (SE)	C	123	US	W203-3 in 634	C	140 Czechoslovakia Album with 100 perfins plus dups.			
96	US	N104.1 in 637 (crease)	C+	124	US	E22.5P, B33, O70.5P, Des. 52P, and Des. 53P in a coil line strip of 5 Scott #1898A. See images below.	D+				
97	US	N104.5 in 720	C	125	US	Two pattern C234 - one in C29 and one in C31 (RR)	D+	141 Ireland Album with 40 perfins plus dups.			
98	US	N113-3 in 684 (crease)	C	126	US	H107 in C30	C				
99	US	N113A-6 in 595	C	127	US	J42 in Q1 (1h)	C	142 Canada 1985 Catalog with a few stamps.			
100	US	N113A-9A in 814	C	128	US	N54 in Q8 (SE - 2h)	E				
101	US	N113AB-2 in 968	C	129	US	N54A in Q7	C	143 Danish 1983 Catalog.			
102	US	N113ABb-7A in 720	C	130	US	O70 in 634 on cover - see below.	E				
103	US	N113Bb-1 in 901	C	<p style="text-align: center;">End of Auction #136. Good Luck with Your Bids!!</p>							
104	US	N113C-7A in 811	C								
105	US	N113Cc-1A in 634	C+								
106	US	N113Dd-12 in 814 (perfin on edge)	C								

Remember the minimum bid is \$30 on A rates, \$18 on B+ rates, \$1 on single C rates, and \$2 on all others.



Lot #124
(75% Actual size)



Lot #130
(55% Actual size)

Secretary's Report

Ken Rehfeld (#3394)

New Members:

#4055 Frank Ellis
815 SW Lake Charles Circle
Port St. Lucie, FL 34986-3419
fellis42@aol.com
Beginner, U.S.
Jerry Hejduk

#4056 Jose Levy
34 Circle Creek Way
Ormond Beach, FL 32174-1824
jlevy5@cfl.rr.com
Beginner
Jerry Hejduk

#4057 Rodney Watts
4901 High Street
Rocklin, CA 98677-2433
Beginner, U.S. Airmails, US perfins & precancels,
and California precancels
13rodi3@att.net
Jerry Hejduk

4058 Charles Brown
105 Fairview Avenue
Eldon, MO 65026-1420
spook1man2001@yahoo.com
Beginner, W/W
Fulton Stamp Club

4059 John Brain
RR 1, Site 25, Unit #4
Princeton, BC V0X 1W0
CANADA
Beginner, Canada, G.B., USA
roundtwo@uniserve.com

Welcome Back:

#2617 James Fattaleh
2981 Staunton Road
Huntington, WV 25702-1243

#3760 William R. Packard
P.O. Box 1727
Clackamas, OR 97015-1727

#3762 Maciej Pilecki
Parafialna 61/27
52-233 Wroclaw
POLAND

#3702 James B. Uline
1981 Hoch Road
Prospect, OH 43342-9779

Address Change:

#3836 Andrew A. Buco
407 Woodland Park Lane
Woodland Park, CO 80863-2420

#3947 Catherine C. Fields
533 Wimberly Rd
Apex, NC 27523-6777

#1033 Philip S. Jones
62 S. Brooks Street
Columbus, IN 47201-7226

#3871 Alexander W. Marks Jr
701 S. Main Street Trlr 62
Coupeville, WA 98239-3515

#1255 David F. Murray
220 E 87th St, Apt 4E
New York, NY 10128-3103

#3035 Blair M. Stitt
1230 Taylor Lane Ext Unit 109
Lehigh Acres, FL 33936-6156

Email Correction:

#4040 Hugo Bernaers:
hugo.bernaers@milcobel.com

Closed Album:

LM#4 Erling Dehli
#3037 Kevin D. Kienlein
#3281 Edwin A. Locke
#1908 Allan M. Oleksyn
#3953 Paul Stein

Membership

460

Member Want Ads

ATTENTION NEW MEMBERS: I have many D+, D, E, and F rate U.S. perfins for sale. Please send me your want lists. **Contact:** Francis Stunzi, 37 Smith Street, Rouses Point, NY 12979-1602; email: fastunzi@primelink1.net.

Want ads are published for members on a space-available basis at the following rates: one insertion - 10 cents per word; three consecutive insertions of the same ad - 20 cents per word. **Members are entitled to one free ad per year.** Neither the Perfins Club nor the Editor accepts responsibility for the validity of the ads. Payment for the ads should be sent to the Editor or by PayPal to perfin@charter.net with prior notification to the Treasurer and Editor.

The Perfins Bulletin
P.O. Box 125
Spokane Valley, WA 99016-0125
Periodicals

Periodicals

Prices Realized Perfins Club Auction #134 - October 31, 2013

<u>Lot</u>	<u>Price</u>	<u>Lot</u>	<u>Price</u>	<u>Lot</u>	<u>Price</u>	<u>Lot</u>	<u>Price</u>	<u>Lot</u>	<u>Price</u>	<u>Lot</u>	<u>Price</u>
1	NB	21	NB	40	NB	59	NB	78	NB	97	9.25
2	32.00	22	NB	41	NB	60	NB	79	NB	98	NB
3	NB	23	6.00	42	NB	61	NB	80	13.00	99	NB
4	NB	24	20.00	43	NB	62	NB	81	6.00	100	4.75
5	NB	25	NB	44	NB	63	NB	82	NB	101	21.00
6	NB	26	NB	45	8.25	64	7.25	83	NB	102	NB
7	NB	27	30.00	46	10.00	65	18.75	84	10.00	103	NB
8	33.00	28	NB	47	14.50	66	12.75	85	18.75	104	7.25
9	NB	29	NB	48	37.25	67	14.00	86	13.00	105	NB
10	NB	30	20.00	49	9.25	68	NB	87	19.25	106	NB
11	NB	31	10.00	50	33.50	69	18.75	88	NB	107	10.00
12	36.00	32	4.50	51	13.00	70	10.00	89	NB	108	20.00
13	NB	33	NB	52	9.25	71	NB	90	NB	109	9.25
14	NB	34	NB	53	NB	72	NB	91	13.00	110	NB
15	44.00	35	NB	54	14.00	73	NB	92	4.50	111	20.00
16	NB	36	10.00	55	NB	74	27.00	93	NB	112	20.00
17	NB	37	NB	56	NB	75	NB	94	NB	113	10.00
18	NB	38	NB	57	NB	76	18.75	95	19.25	114	NB
19	NB	39	NB	58	NB	77	NB	96	13.00	115	20.00
20	NB										

The Perfins Bulletin (ISSN 8750-1627; USPS 120-490) is published bi-monthly for \$15 per year by The Perfins Club, Inc., 7909 N. Main Street, Kansas City, MO 64118-1449.

Periodicals postage is paid at Kansas City, MO and at additional offices.

Postmaster: Please send address changes to The Perfins Club, Inc., P.O. Box 125, Spokane Valley, WA 99016-0125